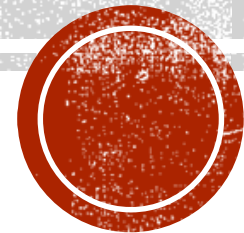


**COLLEGE BOARD**  
**SAT SUITE OF ASSESSMENTS**  
**DECEMBER 9, 2015**

Kristi Hineman, Math Consultant  
Emily McEvoy, Assessment Consultant



# KEY DELIVERABLES:

- Why the SAT
- Explore the components of the SAT Suite of Assessments
- How to prepare students
- Resources
- SAT practice test #1



# FOR OUR TIME TOGETHER...

- The online location of all materials and links will be provided at the end of the presentation.
- We will take all questions at the end of the presentation on the provided index cards.
- If you need to take a call or have a side conversation, please step out in the hall.
- If it rings, dings or sings... please set it to silence.



# SAT SUITE OF ASSESSMENTS

- ***Reflect*** – individually about what you Know, Think You Know & Want to Know about SAT Suite of Assessments

Know	Think We Know	Want to Know



# WHY THE SAT?

- Accepted at **all Michigan universities**
- Accepted or required at nearly all four-year colleges and universities in the United States
- The redesigned test is more focused and more useful than ever before.
  - It measures the skills and knowledge that colleges are looking for today.
  - It reflects what Michigan students are already learning in their classrooms.
- More than 1.6 million students take the SAT annually
- The SAT is among the most rigorously researched and designed tests in the world.
- It provides valuable information about college readiness; when used in combination with high school GPA, SAT scores are shown to be the best predictor of a student's likelihood to succeed in college.

<https://collegereadiness.collegeboard.org/state-partnerships/michigan>



# BENEFITS OF TAKING THE SAT

- SAT scores directly relate to
  - Michigan's content standards
  - knowledge and skills needed for college and career success
- Students can send SAT scores to four colleges for FREE
- Colleges can use SAT, among other factors, for admission as well as on scholarship awards, course placement, or admissions to a specific program or major.
- The SAT provides connections to college, financial support, and scholarships.

<https://collegereadiness.collegeboard.org/state-partnerships/michigan>



---

THE REDESIGNED

---

SAT<sup>®</sup>

---

For K–12 Students, Educators, and Parents

[deliveringopportunity.org](http://deliveringopportunity.org)



# The College Board Readiness & Success System

Beyond tests. More opportunities.



- + **Easier** for students to navigate a path through high school, college and career
- + Extraordinary, **exclusive** partnerships that deliver **unprecedented** benefits to students, educators, and states/districts





# 8 Key Changes to the SAT



**Relevant words  
in context**



**Command of  
evidence**



**Essay analyzing a  
source**



**Math focused on  
three key areas**



**Problems grounded in  
real-world contexts**



**Analysis in science  
and social studies**



**Founding documents  
and great global  
conversation**



**No penalty for  
wrong answers**



**Relevant Words in Context** — The redesigned assessments will focus on relevant words, not obscure vocabulary, that students will use in college and beyond.



**Command of Evidence** — The redesigned assessments will ask students to demonstrate their ability to interpret, synthesize, and use evidence found in a wide range of sources.



**Essay Analyzing a Source** — The redesigned SAT essay section, ~~which will be optional~~ <sup>Not for MI</sup>, will more closely mirror college writing assignments. Students will read a passage and explain how the author builds an argument to persuade an audience.



**Focus on Math That Matters Most** — The tests will focus on three essential areas of math: Problem Solving and Data Analysis; the Heart of Algebra; and Passport to Advanced Math.



**Problems Grounded in Real-World Contexts** — Throughout the redesigned assessments, students will engage with questions grounded in the real world and directly related to the work performed in college and career.



**Analysis in Science and in History/Social Studies** — Students will apply their reading, writing, language, and math skills to solve problems in a broad array of contexts.



**Founding Documents and Great Global Conversation** — Every time students take one of the redesigned assessments, they will encounter a passage from a founding document or a text from the ongoing global conversation about freedom, justice, and human dignity.



**No Penalty for Wrong Answers** — The redesigned assessments will remove the penalty for wrong answers. Students will earn points for the questions they answer correctly.

# About the Redesigned SAT

## 3 SECTIONS:

Evidence-Based  
Reading and Writing  
200-800 points

Math  
200-800 points

Essay  
Separate Score

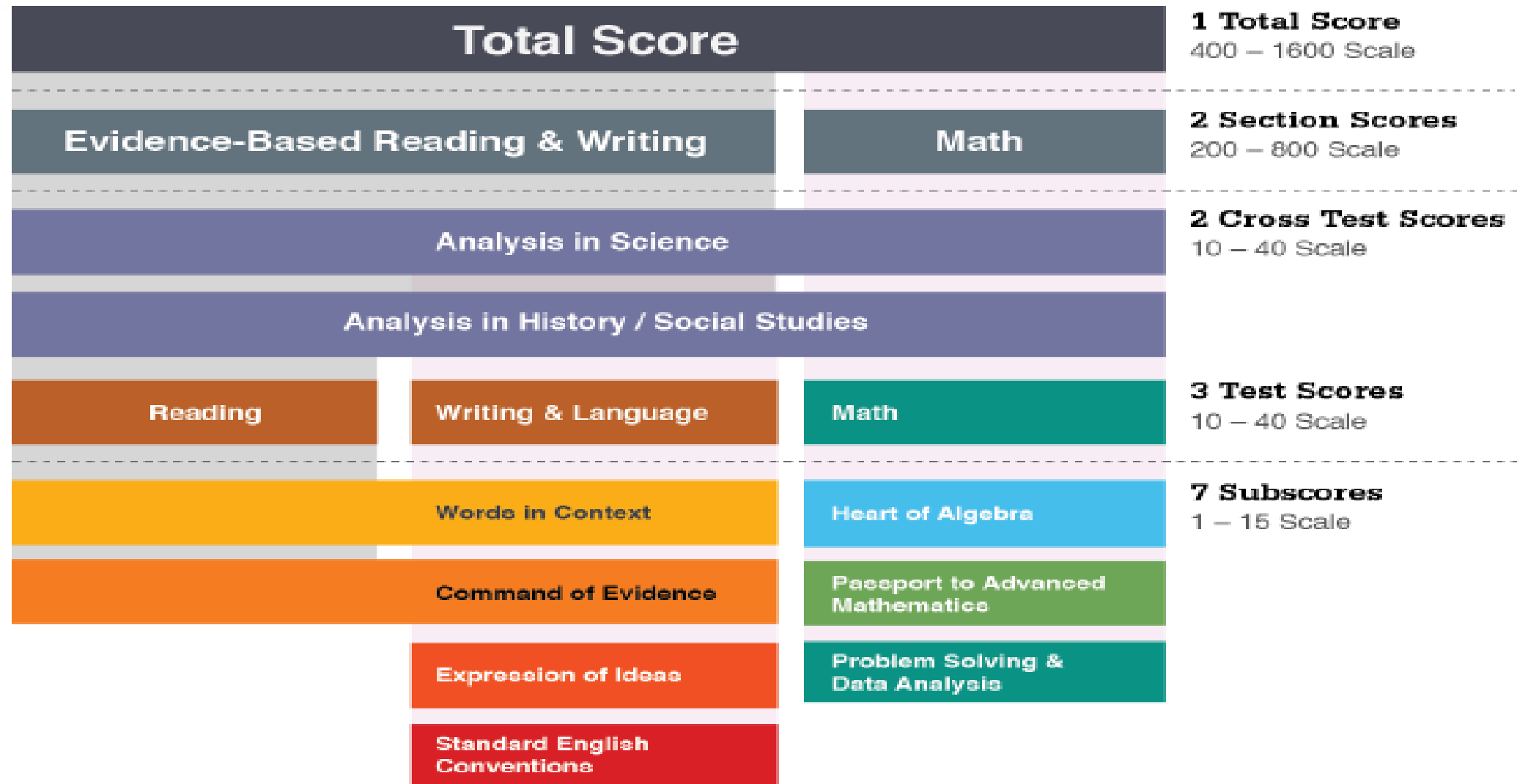
3 Hours\*

50 Minutes\*

*\*Please note: Precise timing is tentative and subject to research.*

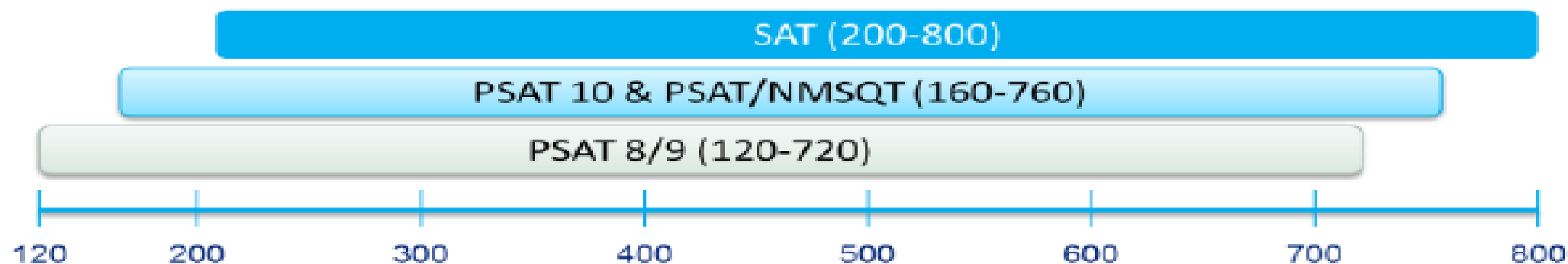
SAT

# SAT Scores and Subscores

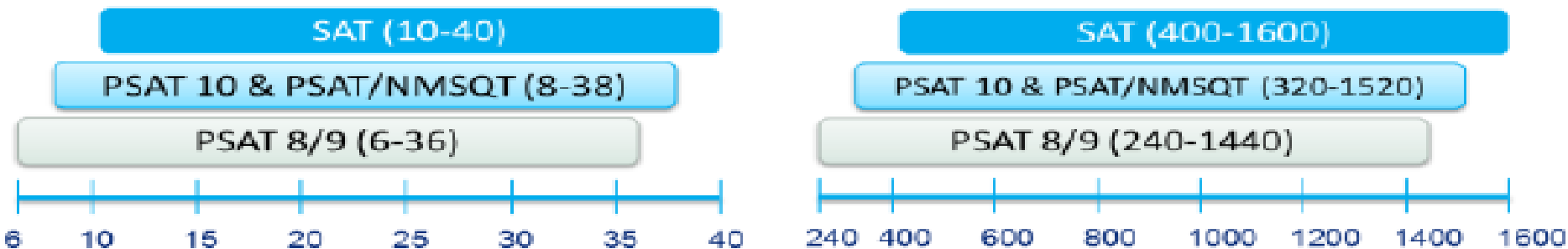


# Longitudinal Progress Monitoring

- + Section Scores will be placed on a vertical scale.

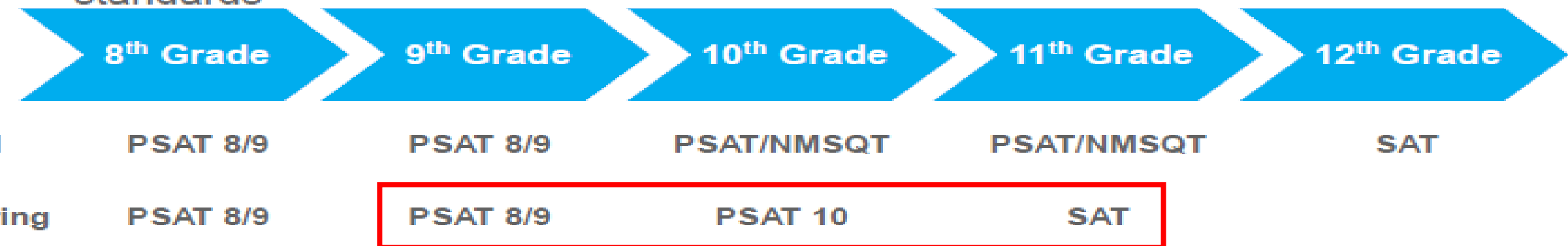


- + This same concept will hold true for the **Test and Cross-Test Scores** as well as **Total Score**.



# SAT Suite Implementation Models

- + Flexible administration timing
- + Vertical score scale that measures student growth
- + Tools to improve access and success in advanced learning options
- + Online reporting portal with interactive features for educators (e.g., sorting, filtering), enhanced data and drill down capabilities; connections to state standards



MI State Assessments



# Section Specifications

	SAT		PSAT 10		PSAT 8/9	
	Time	# of Questions	Time	# of Questions	Time	# of Questions
Reading	65 min	52 Q	60 min	47 Q	55 min	45 Q
Writing & Language	35 min	44 Q	35 min	44 Q	30 min	40 Q
Math No Calculator Calculator	25 min 55 min	58 Q	25 min 45 min	48 Q	20 min 40 min	38 Q
Essay	50 min	1 prompt	None		None	
Total	180 min (230 min with essay)	154 Q (155 Q with essay)	165 min	139 Q	145 min	120 Q

# MICHIGAN SPRING TEST DATES

## ■ 11<sup>th</sup> Grade

- April 12<sup>th</sup> - SAT w/ essay
  - April 26<sup>th</sup> - Make-up date
- April 13<sup>th</sup> - WorkKeys
  - April 27<sup>th</sup> - Make-up date
- April 11<sup>th</sup> – April 29<sup>th</sup> (3 weeks) - M-Step

## ■ 9<sup>th</sup> & 10<sup>th</sup> Grade

- April 12<sup>th</sup> or 13<sup>th</sup> – PSAT
  - April 26<sup>th</sup> or 27<sup>th</sup> – Make-up date



## TEST STRUCTURE AND FORMAT

Testing time

Structure

Score range

Test length and timing

The new SAT has been designed and knowledge research shows throughout 190 countries and territories. Virtually all colleges and universities use SAT scores as a factor to make admission decisions.

For more information, visit [sat.collegeboard.org](https://sat.collegeboard.org)

# CHOOSE SKILLS.

THE NEW  
SAT®

Launching March 2016 — the new SAT® champions the classroom skills and knowledge that are essential for college. Encourage your students to choose the new SAT because the skills they own should take them further.

TEST FEATURES	THE NEW SAT®	ACT®
Curriculum-based	✓	✓
Optional essay	✓	✓
No guessing penalty	✓	✓
Full test specifications available online	✓	
FEE WAIVERS		
Test fee waivers for eligible students	✓	✓
Free late registration for fee waiver students	✓	
Four college application fee waivers sent directly to eligible students	✓	
Four free score sends with registration	✓	✓
Four free additional score sends	✓	
FREE PRACTICE		
Official, personalized practice recommendations on Khan Academy® that help students where they need it most.	✓	
Four full-length practice tests	✓	
Sample Test Questions	✓	✓
SAT Practice app with paper scan & score functionality	✓	
SKILLS AND KNOWLEDGE TESTED		
Focused on the few things evidence shows matter most for college and career, in both math and ELA	✓	
Vocabulary: Focused on words more widely used in college and career	✓	✓
History/social studies and science included throughout all required sections of the test	✓	
Integration of words and numbers across academic disciplines	✓	
Demonstration of command of evidence	✓	
Essay analyzing a source	✓	

Review the similarities and differences between The New SAT and ACT.  
(Tan document)

Think about some takeaways from the comparison.



# FOR STUDENTS TAKING THE TEST IN MI

- Michigan schools administering the SAT, PSAT 10, or PSAT 8/9 in April 2016 will automatically register students for those test dates.  
**Students do not need to take any action.**
- Students will want to sign up for a free College Board account
- With an account, you can access
  - SAT and AP scores online, and send them to colleges.
  - Manage your personal college list
  - Save your scholarship searches
  - Compare costs at colleges that interest you, and more

<https://collegereadiness.collegeboard.org/state-partnerships/michigan>



# PREPARE FOR THE SAT

## ■ Free Practice from the College Board

The SAT Suite of Assessments website offers sample questions, printable full practice tests, and more resources to help students get familiar with the test.

➔ [Explore SAT Sample Questions and Practice Tests](#)

## ■ Free Practice on Your Phone

Download our free app, Daily Practice for the New SAT. Answer a question a day on the app and get immediate feedback.

➔ [Get the Free Practice App](#)

**SKILLS AREN'T BOUGHT. THEY'RE LEARNED.**

Want to be sure you're showing colleges your personal best? The new SAT has brand-new practice resources to help you sharpen your skills and deepen your knowledge. They're free and available 24/7, so everyone, everywhere, can get ready.

**BANK ON SKILLS.**

Want to put your skills and knowledge to work for you? Take a look at the new SAT's expanded support services.

**STUDENT SEARCH SERVICE\***

Make yourself easy to find! If you opt in to the Student Search Service\*, you'll hear from colleges and universities looking for students just like you.

**FREE PRACTICE ON KHAN ACADEMY\***

Khan Academy is a leading not-for-profit online learning resource, with more than 29 million registered students enjoying free, world-class education. And now they've made Official SAT Practice available at [satpractice.org](#). Answer a few quick questions on the site, and link your PSAT/NMSQT® scores to receive individualized study recommendations and learn at your own pace. Based on your personal results, you'll be able to:

- Focus your time and energy where you need it most.
- Strengthen your skills and knowledge with thousands of practice questions, video lessons, and helpful hints.
- Check your progress with instant feedback, so you can see how far you've come and where to focus next.

**DAILY PRACTICE FOR THE NEW SAT APP**

For quick, on-the-go practice, the Daily Practice for the New SAT mobile app is available for iOS (iPhone, iPad, iPod Touch) and Android devices (phones and tablets).

- See how you're doing over time and compare and share results with daily questions and a progress tracker.
- Scan and score paper-and-pencil SAT Practice Tests and link your results to Khan Academy for even more personalized practice.

**SIGN UP FOR PERSONALIZED STUDY RECOMMENDATIONS ON KHAN ACADEMY**  
[SATPRACTICE.ORG](#)

**FEE WAIVERS**

Don't let fees hold you back. Ask your counselor about how you can take the SAT and apply to college for free, or visit [sat.org/fee-waiver](#) to see if you qualify.

Green document

<https://collegereadiness.collegeboard.org/state-partnerships/michigan>



# PREPARE FOR THE SAT

## Free Practice at Khan Academy®

All students can access Khan Academy's world-class personalized SAT practice resources for free. These interactive resources complement and reinforce the great work already happening in Michigan classrooms with official SAT practice questions and full-length tests. Teachers and students will also receive detailed information on student progress to guide next steps.

### ➔ [Practice on Khan Academy's Website](#)

To take advantage of these resources, sign up for both a [College Board account](#) and a [Khan Academy account](#). You'll be able to link these accounts beginning in December 2015.

**SKILLS AREN'T BOUGHT. THEY'RE LEARNED.**

Want to be sure you're showing colleges your personal best? The new SAT has brand-new practice resources to help you sharpen your skills and deepen your knowledge. They're free and available 24/7, so everyone, everywhere, can get ready.

**BANK ON SKILLS.**

Want to put your skills and knowledge to work for you? Take a look at the new SAT's expanded support services.

**STUDENT SEARCH SERVICE\***

Make yourself easy to find! If you opt in to the Student Search Service\*, you'll hear from colleges and universities looking for students just like you.

**FREE PRACTICE ON KHAN ACADEMY\***

Khan Academy is a leading not-for-profit online learning resource, with more than 29 million registered students enjoying free, world-class education. And now they've made Official SAT Practice available at [satpractice.org](#). Answer a few quick questions on the site, and link your PSAT/NMSQT® scores to receive individualized study recommendations and learn at your own pace. Based on your personal results, you'll be able to:

- Focus your time and energy where you need it most.
- Strengthen your skills and knowledge with thousands of practice questions, video lessons, and helpful hints.
- Check your progress with instant feedback, so you can see how far you've come and where to focus next.

**DAILY PRACTICE FOR THE NEW SAT APP**

For quick, on-the-go practice, the Daily Practice for the New SAT mobile app is available for iOS (iPhone, iPad, iPod Touch) and Android devices (phones and tablets).

- See how you're doing over time and compare and share results with daily questions and a progress tracker.
- Scan and score paper-and-pencil SAT Practice Tests and link your results to Khan Academy for even more personalized practice.

**SIGN UP FOR PERSONALIZED STUDY RECOMMENDATIONS ON KHAN ACADEMY SATPRACTICE.ORG**

Green document

<https://collegereadiness.collegeboard.org/state-partnerships/michigan>



KHANACADEMY.ORG



**KHAN**  
ACADEMY

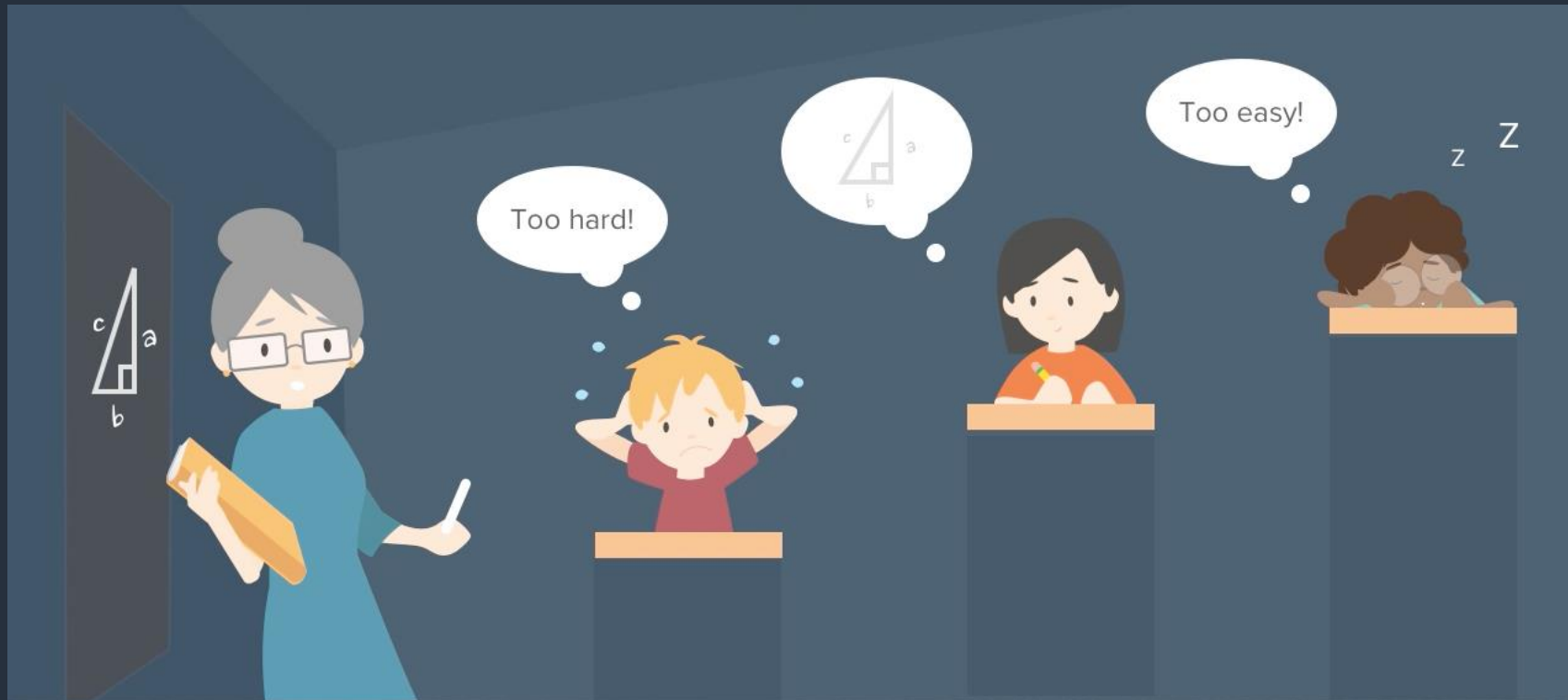
*A free, world class education  
for anyone, anywhere*

back of green document



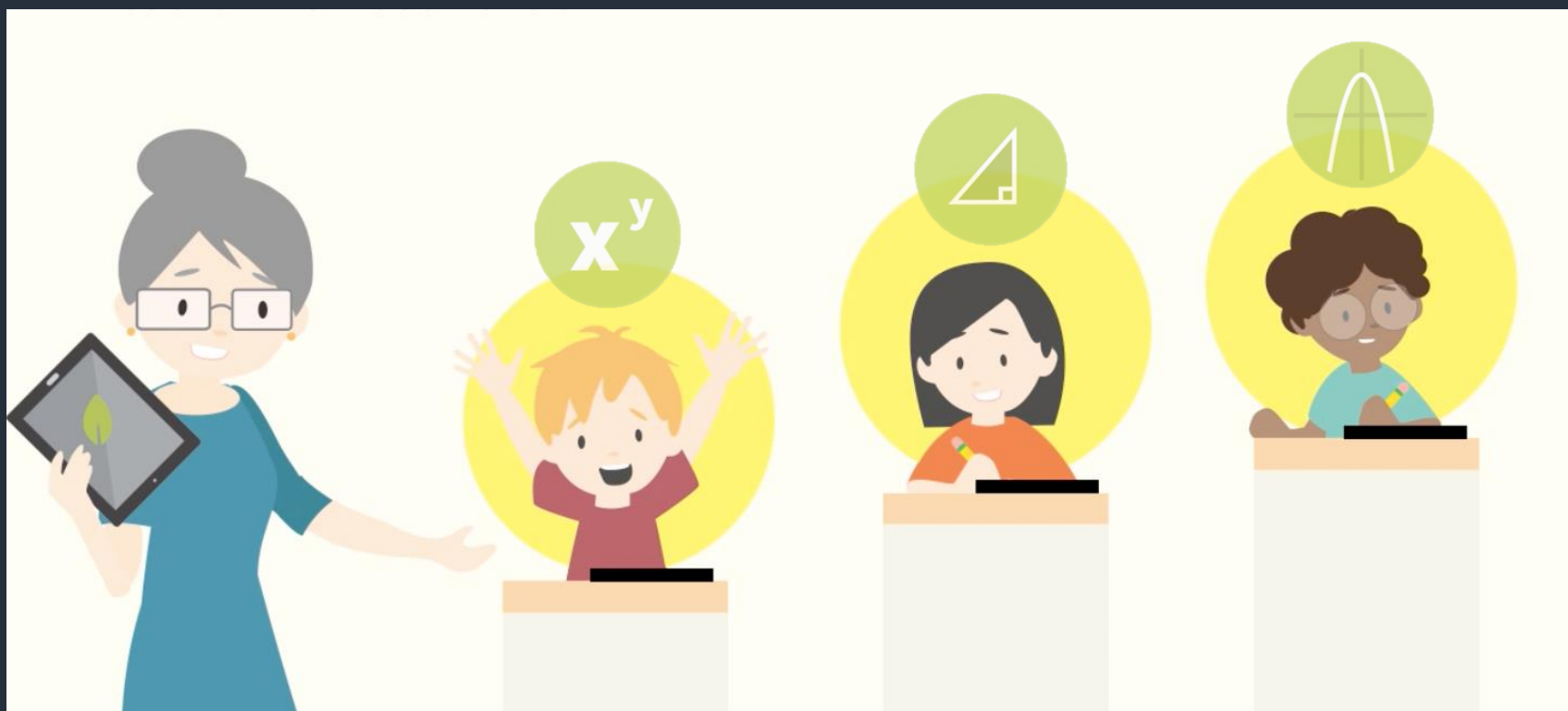
# Our Educational Challenge:

Reaching every student at their own level



# The Khan Academy Solution

A personalized learning experience  
with content customized for each student



# What is Khan Academy?

A nonprofit with a mission to provide a **free** world-class education for anyone, anywhere

~**10,000,000** unique monthly users



# Khan Academy offers...

- Video lessons across a wide range of subjects
- A deeply personalized experience in math (where we will focus today)



$$\begin{array}{r} 2x^2 + 3 = 75 \\ - 3 \quad - 3 \\ \hline 2x^2 = 72 \\ \underline{2} \quad \underline{2} \end{array}$$



# Encourage your child to learn!

- Sign up for a Khan Academy parent account to review your child's activity
- Celebrate their successes
- Help them when they are stuck
  - Remind them about the hints and associated videos
- Learn something else new (e.g., computer programming, art history) yourself or with your child!



# A KA parent account helps you see what your child is learning

- Review your child's activity at any time on your parent homepage
- Receive weekly emails summarizing your child's activity and highlighting ways you can support your child

## ACTIVITY SUMMARY

Becca Naul is **STRUGGLING** with 1 skill:



Converting units

5 minutes · 11 questions

★ [View an example](#)

Becca Naul worked on but **NEEDS PRACTICE** with 6 skills:



Rate problems 2

2 minutes · 2 questions



Equation practice with segment addition

2 minutes · 1 question

Becca Naul **LEVELED UP** in 30 skills, including:



Solving ratio problems with tables

10 minutes · 9 questions



Using inequalities to describe real-world contexts

6 minutes · 11 questions

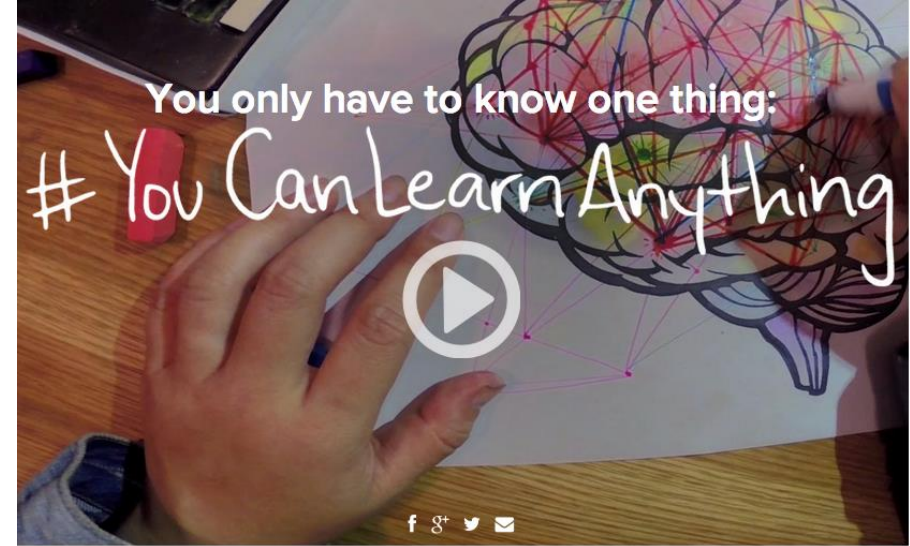




# Help your child learn to learn

- Most of us are held back not by our innate ability, but by our mindset. We think intelligence is fixed, but it isn't. Our brains are like a muscle. The more you use it and struggle, the more it grows
- Helping your child adopt this 'can learn' attitude will enable them to persevere and learn more in their class and on KA
- Check out videos that can help you and your child adopt this mindset at:  
[khanacademy.org/youcanlearnanything](https://khanacademy.org/youcanlearnanything)

KHANACADEMY.ORG



Help people realize they can build up their intelligence by embracing the struggle of learning.

Share the You Can Learn Anything video:

f Share on Facebook

Share on Twitter

17,233,694 people are changing minds

## The science and the stories



### Growing your mind

Sal explains in this video how to grow your intelligence.



### The Growth Mindset

Sal talks with Stanford Professor Carol Dweck about her research on the Growth Mindset.



### Success through effort

John Legend shares a personal story about overcoming early rejections in his career to get to where he is today.





# Parents & Khan Academy

- [Create a Student Account for Your Child](#)
- [How to Edit Your Child's Settings](#)
- [How to See Your Child's Profile](#)
- [How to Make a Recommendation](#)

# Students & Khan Academy

Our system will create a **personalized plan** that focuses you on practicing the skills you need to **improve the most**.

You can get started on a single subject with **4 short diagnostic quizzes** that cover all of the different skills in that SAT subject. Or you can start by taking an **official practice exam from College Board**.

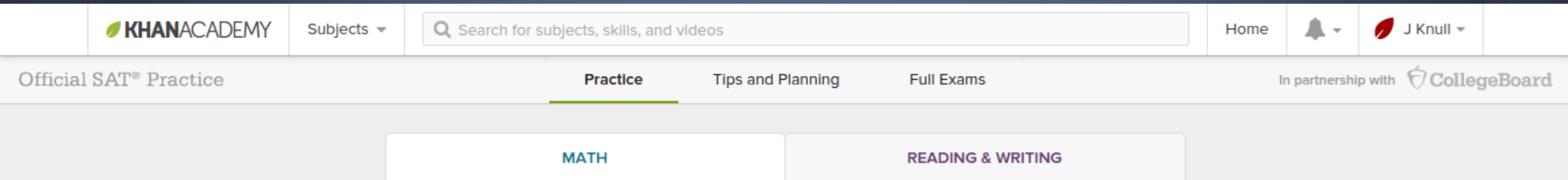
Where would you like to start today?

- 
- ☐ **A** Math quiz
  - ☐ **B** Reading & Writing quiz
  - ☐ **C** Full 3-hour practice exam
-

# Students & Khan Academy

- Answer the question: Where would you like to start today?
  - DO NOT select full 3-hour practice exam
- [How to Edit Your Account Settings](#)
- [How to Add a Coach/Teacher/Parent](#)


# Navigating Khan Academy



- Practice Tab
  - Math/Reading & Writing
    - Take 4 diagnostic quizzes (untimed and do not save)
    - Individualized Practice Sessions each followed by...
    - Practice Quiz
  - How students perform on diagnostic quizzes and individualized practice sessions dictates the practice quiz content

# Navigating Khan Academy

- Practice Quiz Tools

 Interpreting linear functions KHANACADEMY [Exit this Practice](#)

$$W = -\frac{1}{2}m + 16$$

Henry's water bottle is leaking at a constant rate. The amount of water,  $W$ , in ounces, that is left in the water bottle after leaking for  $m$  minutes is given by the equation above. What does the  $-\frac{1}{2}$  mean in the equation?

A

The water bottle loses 2 ounces of water per minute.

B

The water bottle loses  $\frac{1}{2}$  an ounce of water per minute.

C




The water bottle has  $\frac{1}{2}$  an ounce of water in it at the start.

D

$\frac{1}{2}$  of the water has leaked from the water bottle in one minute.

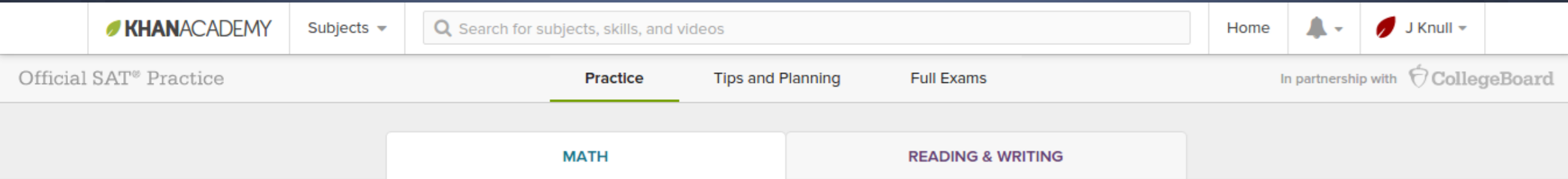
[Watch a video](#) [Show hint](#) [Report a mistake](#)

Do 5 questions 

   4 5

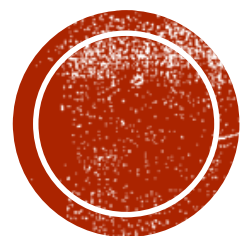
Check answer

# Navigating Khan Academy



- Full Exams Tab

- 4 full exams
- 4 sections within each exam
  - Reading, Writing & Language, Math w/Calculator, Math w/out
- You can take each of the 4 full exams online once
- Download and print full exams to take paper/pencil
- Essay Prompts are paper/pencil (for now)
- Take the full exams AFTER taking the diagnostic quizzes, individualized practice sessions, and practice quizzes



# **SAT PRACTICE TEST #1**

Take a few moments to review the practice test.  
Think about what stands out to you.

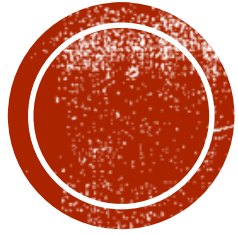


# SAT SUITE OF ASSESSMENTS

- ***What questions do you still have?*** – take a moment to have a quick discussion with your neighbor. After your conversation, if you are still wondering about anything SAT related, please write down your questions on the index card provided. We will do our best to answer any additional questions.

Know	Think We Know	Want to Know





# THE POWERPOINT AND RESOURCES

Available at <https://goo.gl/b3dZKc> as a pdfs.

All of the links are accessible through the documents.

# THANK YOU!

**Emily McEvoy**  
**Assessment Consultant**  
[emcevoy@misd.net](mailto:emcevoy@misd.net)

**Kristi Hineman**  
**Math Consultant**  
[khineman@misd.net](mailto:khineman@misd.net)

